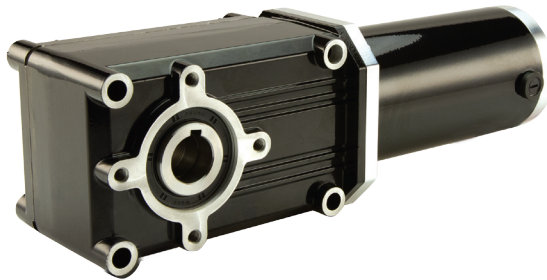


Maximum Efficiency Right-angle Gearmotors

720 PMDC 24V

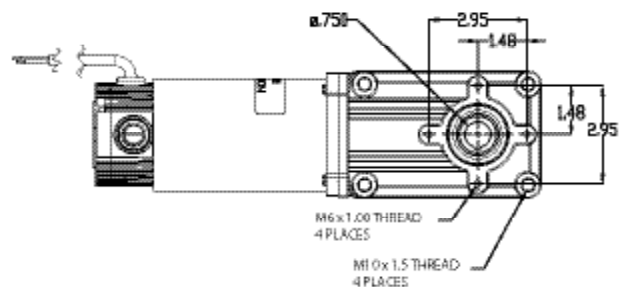
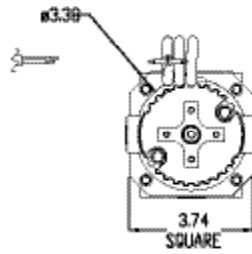
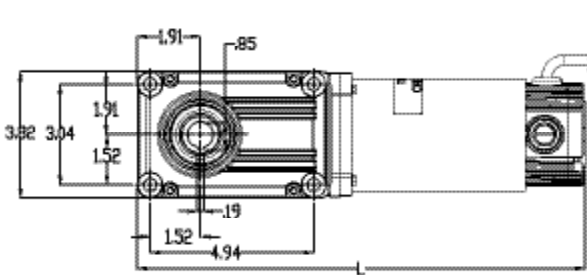


PowerSTAR® 720 Series PMDC 24V right-angle gearmotor offers up to 442 in-lbs of torque running continuously for energy efficient operation in a sleek, compact profile. Uses a 32 Frame TENV PMDC motor with 36" cordset.

720 Series PMDC 24V Gearmotor - TENV

Part Number	Speed (RPM)	Rated Torque	Input HP	Gear Ratio	OHL (lbs)	Amps
021-720C0010	180	35	1/8	10	270	5.9
021-720C0015	120	52	1/8	15	305	5.9
021-720C0020	90	70	1/8	20	330	5.9
021-720C0030	60	104	1/8	30	370	5.9
021-720C0040	45	139	1/8	40	400	5.9
021-720C0050	36	173	1/8	50	430	5.9
021-720C0060	30	208	1/8	60	455	5.9
021-720C0080	23	277	1/8	80	490	5.9
021-720C0100	18	346	1/8	100	525	5.9
021-720C0120	15	415	1/8	120	550	5.9
021-720C0150	12	277	1/15	150	635	3.2
021-720C0180	10	332	1/15	180	670	3.2
021-720C0240	7.5	442	1/15	240	725	3.2

See accessories on page 16



L
L = Gearmotor length:
1/8 HP: 13.57
1/15 HP: 11.91

DC GEARMOTOR
WHITE +LINE
BLACK -LINE
GREEN GROUND
To reverse rotation interchange white and black leads